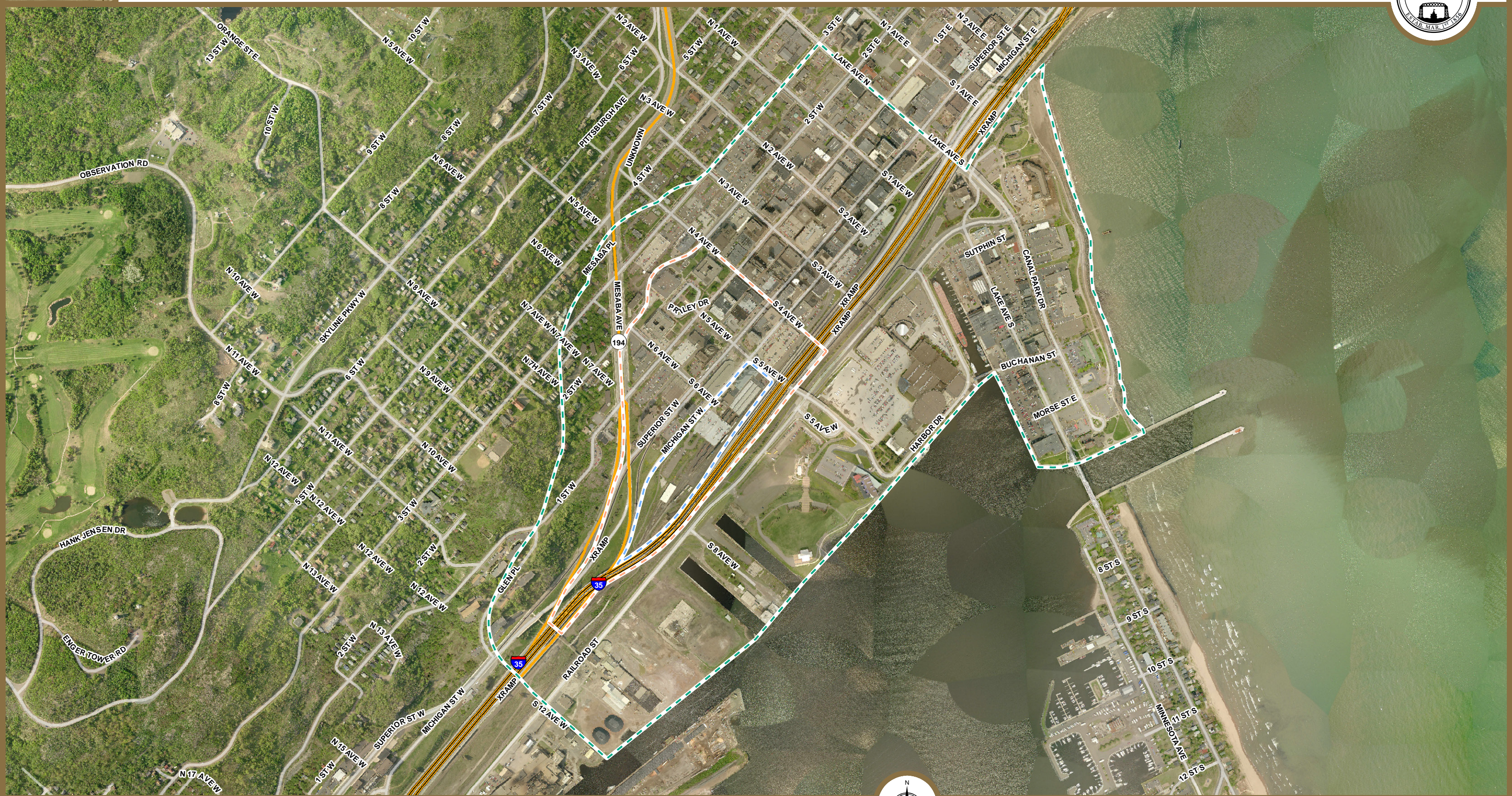




St. Louis County Union Depot  
 A National Historic Property  
 Est. 1892

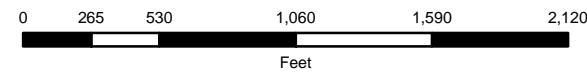
# Union Depot Study Area

## Historic St. Louis County Union Depot - Site Plan & Area Master Plan



### Depot Project Areas

- Site Plan
- Area Master Plan
- Area Master Plan Transition



Prepared By: **St. Louis County**  
**Planning & Development Department**  
 (218) 725-5000  
[www.co.st-louis.mn.us](http://www.co.st-louis.mn.us)



Team Credits: Planning, Property Management, Public Works, Land

Source: St. Louis County

Map Created: 4/29/2009

**Disclaimer**  
 This is a compilation of records as they appear in the St. Louis County Offices affecting the area shown. This drawing is to be used only for reference purposes and the County is not responsible for any inaccuracies herein contained.

© Copyright St. Louis County  
 All Rights Reserved

