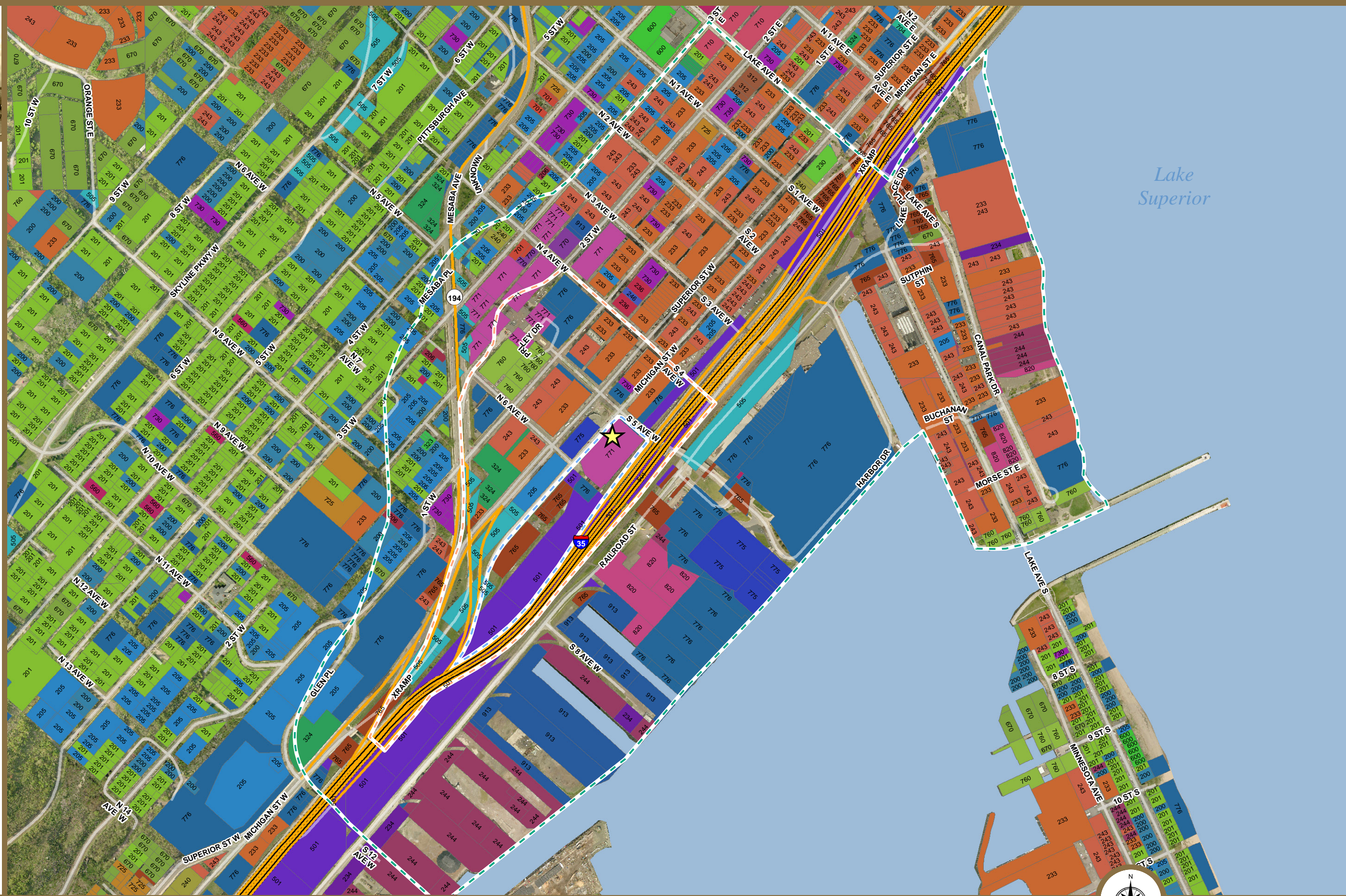




- Land Use**
- 101, AGRICULTURAL
  - 151, SEASONAL RECREATIONAL RESIDENTIAL
  - 152, SEASONAL RECREATIONAL RESIDENTIAL(LINKED)
  - 200, RES 2-3 UNITS OR VACANT LAND
  - 201, RES 1 UNIT
  - 205, APARTMENTS 4 OR MORE UNITS
  - 206, HOMESTEADED UNIT IN APARTMENT 4 OR MORE
  - 210, MANUFACTURED HOME PARKS
  - 230, PUBLIC UTILITY LAND & BLDG PREFERRED
  - 233, COMMERCIAL
  - 234, INDUSTRIAL
  - 236, TELEPHONE
  - 238, QUALIFYING GOLF COURSES
  - 240, PUBLIC UTILITY LAND & BLDG NON-PREFERRED
  - 243, COMMERCIAL OVER 150K
  - 244, INDUSTRIAL OVER 150K
  - 246, TELEPHONE OVER 150K
  - 312, NONPROFIT COMMUNITY SVC ORG NON-REVENUE
  - 313, NONPROFIT COMMUNITY SVC ORG DONATIONS
  - 321, LOW INCOME RENTAL - 1 UNIT
  - 322, LOW INCOME RENTAL - 2 UNITS
  - 323, LOW INCOME RENTAL - 3 UNITS
  - 324, LOW INCOME RENTAL - 4+ UNITS
  - 501, RAILROADS
  - 505, STREETS AND ROADWAYS
  - 560, HOUSING REDEVELOPMENT AUTHORITY PROPERTY
  - 570, OTHER PROPERTIES
  - 600, ASSESSED ELSEWHERE
  - 608, COMMONS AREA ASSESSED PARCEL
  - 650, STATE ACQUIRED LANDS-FROM TAXABLE/PILT
  - 660, STATE ADMINISTERED LANDS-PRV EXEMPT/PILT
  - 670, TAX FORFEITED-REAL ESTATE/PILT OR SEV MIN
  - 701, INDIAN LANDS - NON-RESERVATION
  - 704, INDIAN RESERVATION - IN LIEU TAX @ 5%
  - 705, CEMETERIES - PUBLIC
  - 710, K-12 SCHOOLS - PUBLIC
  - 711, K-12 SCHOOLS - PRIVATE
  - 715, HOSPITALS - PUBLIC
  - 716, HOSPITALS - PRIVATE
  - 720, COLLEGES - PUBLIC
  - 721, COLLEGES - PRIVATE
  - 725, CHURCH PROPERTIES
  - 730, CHARITABLE INSTITUTIONS
  - 731, EMERGENCY SHELTERS FOR VICTIMS OF ABUSE
  - 733, TRANSITIONAL HOUSING
  - 734, ICE ARENAS/BALL PARKS OWNED BY NON-PROFITS
  - 737, CHILDRENS HOMES
  - 758, STATE FORESTS, PARKS AND WILDLIFE REFUGES
  - 760, FEDERAL PUBLIC PROPERTY
  - 765, STATE PUBLIC PROPERTY
  - 770, COUNTY PUBLIC SERVICE ENTERPRISES
  - 771, COUNTY PUBLIC PROPERTY - ALL OTHER
  - 775, MUNICIPAL PUBLIC SERVICE ENTERPRISES
  - 776, MUNICIPAL - ALL OTHER
  - 793, WATER/WASTEWATER TREATMENT FACILITIES
  - 820, MICELLANEOUS
  - 913, DEDA
  - 990, MISSING ASSESSMENT INFO FROM CITY
- Depot Project Areas**
- Site Plan
  - Area Master Plan
  - Area Master Plan Transition
- Union Depot**
- ★



Prepared By: **St. Louis County Planning & Development Department**  
 (218) 725-5000  
 www.co.st-louis.mn.us

Team Credits: Planning, Property Management, Public Works, Land

Source: St. Louis County, City of Duluth

Map Created: 4/28/2009

**Disclaimer**  
 This is a compilation of records as they appear in the St. Louis County Offices affecting the area shown. This drawing is to be used only for reference purposes and the County is not responsible for any inaccuracies herein contained.

© Copyright St. Louis County  
 All Rights Reserved

# Union Depot - Land Use

## Historic St. Louis County Union Depot - Site Plan & Area Master Plan

