



COMMITTEE OF THE WHOLE AGENDA
Board of Commissioners, St. Louis County, Minnesota

July 13, 2021

Immediately following the Board Meeting, which begins at 9:30 A.M.
Bois Forte & Vermilion Lake Township, Fortune Bay, 1430 Bois Forte Rd, Tower

Directions: From Hwy 53 N, Take MN-169 N towards Ely for approx. 17.66 miles, then turn left onto Angus Rd/Co Hwy 77. In approx. 1.82 miles turn right onto Lake Vermilion Reservation Rd, which turns into Reservation Hwy 43/County Hwy 413/Bois Forte Rd, then turn left onto Gold Mine Spur Road and your destination will be on the right.

CONSENT AGENDA:

All matters listed under the consent agenda are considered routine and/or non-controversial and will be enacted by one unanimous motion. If a commissioner requests, or a citizen wishes to speak on an item on the consent agenda, it will be removed and handled separately.

Minutes of July 6, 2021

Health & Human Services Committee, Commissioner Boyle, Chair

1. Extension of Adult and Children's Mental Health Contracts [21-305R]

Public Works & Transportation Committee, Commissioner McDonald, Chair

2. Cooperative Agreement with the Minnesota Department of Transportation to Develop a Railroad Crossing Safety Plan for Railroad Crossings Located on County Roads in St. Louis County [21-306]
3. Agreement with the City of Proctor for a 2nd Street Reconstruction Project [21-307]

Finance & Budget Committee, Commissioner Nelson, Chair

4. Abatement List for Board Approval [21-308]

Central Management & Intergovernmental Committee, Commissioner Jewell, Chair

5. Granting of Easement to Lonson Properties, LLC [21-309]

Environmental & Natural Resources Committee, Commissioner Musolf, Chair

6. Request for Free Conveyance of State Tax Forfeited Land to St. Louis County – Integrated Waste Management Facility [21-310]

TIME SPECIFIC PRESENTATIONS:

10:00 A.M. Mine Tour Project – Sarah Carling

Immediately following the conclusion of the Committee of the Whole Agenda - Bois Forte Heritage Center and Cultural Museum Tour

REGULAR AGENDA:

For items on the Regular Agenda, citizens will be allowed to address the Board at the time a motion is on the floor.

Central Management & Intergovernmental Committee, Commissioner Jewell, Chair

- 1. St. Louis County Diversity, Equity and Inclusion Leadership Group – Award of Proposal to Center for Economic Inclusion [21-311]**
Resolution accepting the DEI strategic planning services proposal submitted by the Center for Economic Inclusion for DEI consulting services.
- 2. Committee Vacancy Appointment to the Board of Adjustment [21-312]**
Resolution appointing a replacement Board of Adjustment member to the St. Louis County Board of Adjustment.
- 3. Committee Vacancy Appointment to the Planning Commission [21-313]**
Resolution appointing a replacement Planning Commission member to the St. Louis County Planning Commission.

COMMISSIONER DISCUSSION ITEMS AND REPORTS:

Commissioners may introduce items for future discussion, or report on past and upcoming activities.

ADJOURNED:

NEXT COMMITTEE OF THE WHOLE MEETING DATES:

July 27, 2021	Proctor City Hall, 100 Pionk Drive, Proctor, MN
August 3, 2021	Government Services Center, 320 W. 2nd Street, Duluth, MN
August 10, 2021	Government Services Center, 201 S. 3rd Ave. W., Virginia, MN

BARRIER FREE: *All St. Louis County Board meetings are accessible to the handicapped. Attempts will be made to accommodate any other individual needs for special services. Please contact St. Louis County Administration (218-726-2450) early so necessary arrangements can be made.*

COMMITTEE OF THE WHOLE ST. LOUIS COUNTY BOARD OF COMMISSIONERS

July 6, 2021

Location: Government Services Center, Duluth, Minnesota

Present: Commissioners Grimm, McDonald, Musolf, and Chair Jugovich

Absent: Commissioners Jewell, Boyle and Nelson

Convened: Chair Jugovich called the meeting to order at 10:17 a.m.

CONSENT AGENDA

McDonald/Musolf moved to approve the consent agenda. Item #3, Purchase of Property Insurance [21-294] was removed from the consent agenda for separate consideration. The motion passed. (4-0 Jewell, Boyle, Nelson absent)

- Minutes of June 22, 2021
- Professional Services Agreement with Kimley Horn for Engineering Services for a Pedestrian Trail Study (Eveleth) [21-292]
- Engineering Services for County Ditch 4 Reestablishment of Records and Partial Abandonment Evaluation [21-293]
- 2020-21 Children In Need of Protective Service and Termination of Parental Rights Northern St. Louis County Parent Attorney Contracts – 1st Amendment [21-295]
- 2021 Flexible Spending Program Plan Document Amendments Under American Rescue Plan Act [21-296]
- Reschedule Location for September 28, 2021 County Board Meeting [21-297]
- Public Auction of Earthen Material on State Tax Forfeited Land (Eagles Nest Township) [21-298]
- Application and Acceptance of IRRR Commercial Redevelopment Grant [21-299]
- Acceptance of IRRR Residential Redevelopment Grant [21-300]
- Online Public Sale of State Tax Forfeited Properties [21-301]

Finance & Budget Committee

McDonald/Jugovich moved to authorize the County Auditor to spread local levies for the provision of fire protection and/or first responder services to identified unorganized territories within the county beginning January 1, 2022, and to authorize the agreements with the listed corporations for the provision of these services. [21-302]. Commissioner McDonald thanked the volunteer fire departments for all of their hard work. After further discussion, the motion passed. (4-0 Jewell, Boyle, Nelson absent)

McDonald/Jugovich moved to authorize the purchase of Property and Related Insurance coverage on major structures and equipment, amended contents, and boiler and machinery from Chubb Group of Insurance Companies through Otis-Magie Insurance Agency of Duluth, MN, for the period July 24,

2021, to July 24, 2022, at the annual premium of \$376,579.30 payable from Fund 720 (Property, Casualty, Liability), Agency 720001 (Property, Casualty, Liability), Object 635100 (Insurance); and further, that the Purchasing Division is authorized to add or delete county properties to the policy or increase the base amount on future determination of valuation of county structures during the policy period. [21-294]. St. Louis County Purchasing Director Donna Viskoe said that the county has over \$550,000,000 of property to insure. Director Viskoe mentioned that the county looked at increasing the deductible to \$50,000; however, that would have only resulted in a \$4,000 premium savings. Bob Heimbach, Account Executive at Otis-Magie Insurance, Inc., said that seven companies provided quotes; however, all the bids were more expensive compared to Chubb Group of Insurance Companies. After further discussion, the motion passed. (4-0 Jewell, Boyle, Nelson absent)

Time Specific Presentation

At 10:42 a.m., Matt Massman, Steve Novak and Nancy Silesky gave a presentation to the Committee relating to the Minnesota Inter-County Association (MICA) End of Session Report.

COMMISSIONER DISCUSSION ITEMS AND REPORTS

Commissioner McDonald noted the next Tuesday's Board meeting will be held in Bois Forte and asked that Board members contact his assistant if they are planning to attend the meet and greet dinner on Monday night.

At 11:28 a.m., Grimm/Musolf moved to adjourn the Committee of the Whole meeting. The motion passed. (4-0 Jewell, Boyle, Nelson absent)

Mike Jugovich, Chair of the County Board

Phil Chapman, Clerk of the County Board

BOARD LETTER NO. 21 – 305R

HEALTH & HUMAN SERVICES COMMITTEE CONSENT NO. 1

BOARD AGENDA NO.

DATE: July 13, 2021

RE: Extension of Adult and
Children's Mental Health
Contracts

FROM: Kevin Z. Gray
County Administrator

Linnea M. Mirsch, Director
Public Health & Human Services

RELATED DEPARTMENT GOAL:

Children will be born healthy, live a life free from abuse and neglect, and will have a permanent living arrangement. Parents will be emotionally and financially able to provide for their children. Adults will live in the least restrictive living arrangement that meets their health and safety needs.

ACTION REQUESTED:

The St. Louis County Board is requested to authorize contracts with qualified providers for Mental Health-Targeted Case Management (MH-TCM) for the balance of Calendar Year (CY) 2021.

BACKGROUND:

The Public Health and Human Services Department (PHHS) has contracted with providers for many years, including Human Development Center (HDC) and Range Mental Health Center (RMHC), to provide needed community mental health services in St. Louis County. Accend, Northland Counseling Center and Mental Health Resources have been added in recent years to offer clients more service options to help them meet their specific needs.

PHHS proposes to extend current Targeted Case Management (TCM) contracts through December 31, 2021. Service payments for TCM for children and adults are paid directly to the provider by the Minnesota Department of Human Services using Title XIX Medical Assistance program funds.

The State will no longer bill the County for the non-federal share (approximately 50%) for HDC TCM service provision because HDC is now Certified Community Behavioral Health Clinic (CCBHC) which allows them to access revenue directly.

1. **Children's Mental Health Targeted Case Management (MH-TCM) contract.**
Providers offering child MH-TCM services for children with Emotional Disturbance and Severe Emotional Disturbance who are eligible for Title XIX Medical Assistance program funds. St Louis County uses the monthly rate set by the State of Minnesota every July 1.
2. **Adult Mental Health Targeted Case Management (MH-TCM) contract.** Providers may also provide MH-TCM services for adults with serious and persistent mental illness who are eligible for Title XIX Medical Assistance program funds. St Louis County uses the monthly rate set by the State of Minnesota every July 1.

RECOMMENDATION:

It is recommended that the St. Louis County Board authorize the following TCM contracted services with the providers indicated below for the remainder of CY 2021.

1. **Children's MH-TCM**
 - Human Development Center
 - Range Mental Health Center

The county share is paid from Fund 230, Agency 232008, Object 601600

2. **Adult MH-TCM**
 - Human Development Center
 - Accend Services
 - Mental Health Resources
 - Northland Counseling Center
 - Range Mental Health Center
 - Web Med Mental Health Services

The county share is paid from Fund 230, Agency 232006, Object 604400

Extension of Adult and Children's Mental Health Contracts

BY COMMISSIONER _____

WHEREAS, Contracted Targeted Case Management (TCM) providers help adults and children with mental illness to remain safe and as independent as possible by providing a full range of community mental health services; and

WHEREAS, The Public Health and Human Services Department has contracted with providers for many years to provide needed community mental health services in St. Louis County; and

WHEREAS, Children may be at risk of out-of-home placement, placed out of the home or at risk of placement failure; requiring intensive services for children with emotional disturbances who have significant difficulties in the home, school, or community; and

THEREFORE, BE IT RESOLVED, That the St. Louis County Board authorize the following TCM contracted services with the providers indicated below for the remainder of CY 2021.

1. Children's MH-TCM

- Human Development Center
- Range Mental Health Center

The county share is paid from Fund 230, Agency 232008, Object 601600

2. Adult MH-TCM

- Human Development Center
- Accend Services
- Mental Health Resources
- Northland Counseling Center
- Range Mental Health Center
- Web Med Mental Health Services

The county share is paid from Fund 230, Agency 232006, Object 604400

BOARD LETTER NO. 21 – 306

PUBLIC WORKS & TRANSPORTATION COMMITTEE CONSENT NO. 2

BOARD AGENDA NO.

DATE: July 13, 2021 **RE:** Cooperative Agreement with the
Minnesota Department of
Transportation to Develop a Railroad
Crossing Safety Plan for Railroad
Crossings Located on County Roads
in St. Louis County

FROM: Kevin Z. Gray
County Administrator

James T. Foldesi
Public Works Director/Highway Engineer

RELATED DEPARTMENT GOAL:

To provide a safe, well maintained road and bridge system.

ACTION REQUESTED:

The St. Louis County Board is requested to authorize a cooperative agreement with the Minnesota Department of Transportation (MnDOT) to develop a Railroad Crossing Safety Plan for railroad crossings located on county roads in St. Louis County. This project is further identified as CP 0000-621920.

BACKGROUND:

St. Louis County owns and maintains approximately 3,000 centerline miles of county roads on which there are 122 active at-grade railroad crossings. The number of trains at these crossings range from one (1) to 36 trains per day. The traffic volumes at these crossings range from five (5) to 7,200 vehicles per day. Most of the rail lines are used for transporting freight and taconite ore.

There are four railroads that operate within St. Louis County. They are the Canadian National Railroad, BNSF Railway, the North Shore Scenic Railroad, and the Lake Superior and Mississippi Railroad. The North Shore Scenic Railroad and Lake Superior and Mississippi Railroad are both short line railroads that provide recreational sightseeing with a railroad experience. The North Shore Scenic Railroad operates along Minnesota's North Shore of Lake Superior from Duluth to Two Harbors. The Lake Superior and Mississippi Railroad operates near the St. Louis River in West Duluth and

Gary New Duluth areas. Of the two short line railroads, only the North Shore Scenic Railroad has railroad crossings on county roads.

For the ten-year period of 2011 through 2020, there were ten (10) reported crashes on county roads in St. Louis County that involved a train. Three of these crashes resulted in a fatality or serious injury. While crashes at railroad crossings involving a train are rare, they have a higher likelihood of resulting in injury or death as compared to other crash types. This was tragically demonstrated by one of the most recent crashes on a county road at a railroad crossing involving a train in St. Louis County which occurred in December 2019. In this crash event, a vehicle pulled in front of an oncoming train resulting in the death of the driver. The crossing at which this crash occurred is controlled by a STOP sign and has unrestricted sight distance when stopped at the STOP sign.

A concerning realization is that crashes involving trains still occur at crossings controlled by gates/signals. For the ten-year period of 2011 through 2020 for crashes that occurred on a county road at a railroad crossing involving a train in St. Louis County, crash density at crossings controlled by STOP signs was 0.0135 crashes/year/crossing whereas the crash density at crossings controlled by gates/signals was 0.0085 crashes/year/crossing. Also concerning is that crashes involving trains are overrepresented at railroad crossings controlled by a STOP sign. Figure 1 provides a comparison of railroad crossings on county roads in St. Louis County by their traffic control devices and contribution to total crashes.

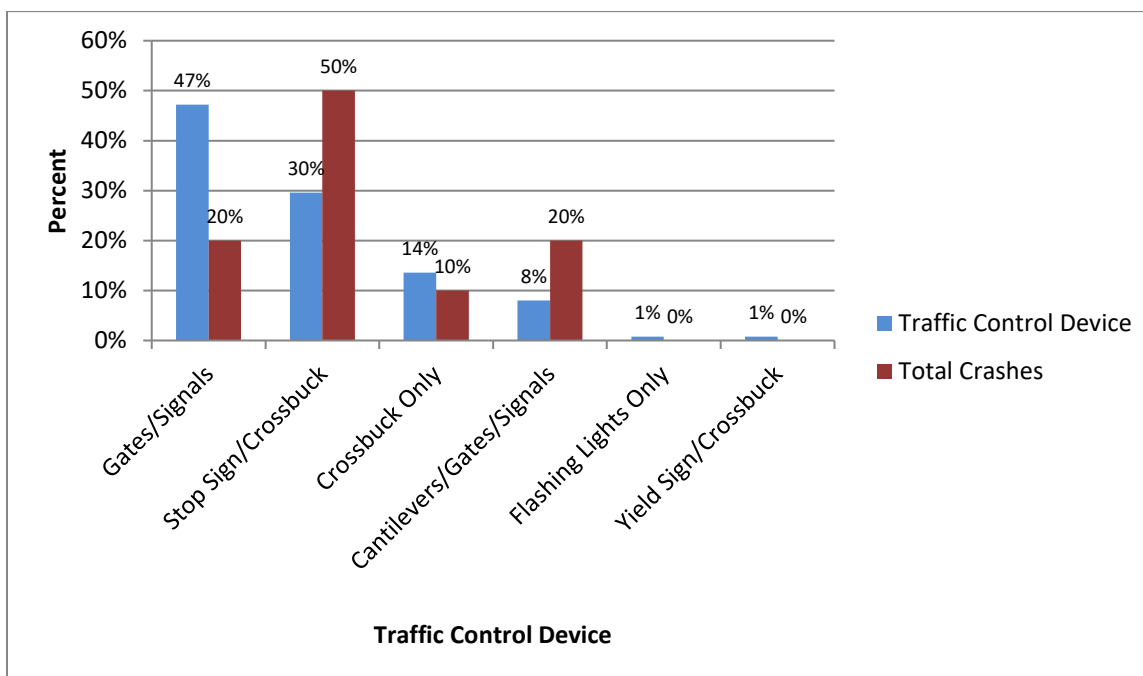


Figure 1: Comparison of Railroad Crossings on County Roads in St. Louis County by Traffic Control Device and Contribution to Total Crashes (2011-2020 crash data)

This background information, along with St. Louis County's commitment to Minnesota's Towards Zero Deaths initiative, suggests it is time to think differently about the approach to railroad crossing safety.

This project will develop a Railroad Crossing Safety Plan for railroad crossings located on county roads in St. Louis County. The key aspects of this plan will:

- Identify railroad crossings that have a high potential for permanent closure,
- Identify railroad crossings that may justify grade separation,
- Recommend safety upgrades to certain railroad crossings that will remain open,
- Balance replacements of existing gates/signals systems with installation of new gates/signals systems,
- Outreach to key stakeholders to gather input.

MnDOT has committed to contributing \$50,000 towards the development of this plan. The total estimated cost of the plan is \$100,000. The Public Works Department plans to release a request for proposals in July 2021 to secure an engineering consultant to complete this project. The Railroad Crossing Safety Plan is expected to be completed by December 2022.

RECOMMENDATION:

It is recommended that the St. Louis County Board authorize a cooperative agreement with the Minnesota Department of Transportation to develop a Railroad Crossing Safety Plan for railroad crossings located on county roads in St. Louis County. Funds received from the Minnesota Department of Transportation will be receipted into Fund 220, Agency 220642, Object 532304.

**Cooperative Agreement with the Minnesota Department of Transportation to
Develop a Railroad Crossing Safety Plan for Railroad Crossings Located on
County Roads in St. Louis County**

BY COMMISSIONER _____

WHEREAS, St. Louis County owns and maintains approximately 3,000 miles of county roads on which there are 122 active at-grade railroad crossings; and

WHEREAS, While crashes at railroad crossings involving a train are rare, they have a higher likelihood of resulting in injury or death as compared to other crash types; and

WHEREAS, A concerning realization is that railroad crossings controlled by signals and gates still experience crashes involving trains, and railroad crossings controlled by a STOP sign are overrepresented in the crash data; and

WHEREAS, This background information, along with St. Louis County's commitment to Minnesota's Towards Zero Deaths initiative, suggests it is time to think differently about the approach to railroad crossing safety; and

WHEREAS, The Public Works Department intends to develop a Railroad Crossing Safety Plan for railroad crossings on county roads to better target investments to improve safety at railroad crossings; and

WHEREAS, The Minnesota Department of Transportation has committed to contributing \$50,000 towards the development this Railroad Crossing Safety Plan.

THEREFORE, BE IT RESOLVED, That St. Louis County (Local Agency) enter into an agreement with the Commissioner of Transportation for the development of a Railroad Crossing Safety Plan for Railroad Crossings located on county roads in St. Louis County, Minnesota.

RESOLVED FURTHER, That the County Board Chair, Public Works Director and the Assistant County Attorney are hereby authorized to execute said agreement and any amendments thereto for and on behalf of the Local Agency.

RESOLVED FURTHER, That funds received from the Minnesota Department of Transportation will be receipted into Fund 220, Agency 220642, Object 532304.

BOARD LETTER NO. 21 – 307

**PUBLIC WORKS & TRANSPORTATION COMMITTEE
CONSENT NO. 3**

BOARD AGENDA NO.

DATE: **July 13, 2021**

RE: Agreement with the City of Proctor for a 2nd Street Reconstruction Project

FROM: Kevin Z. Gray
County Administrator

James T. Foldesi
Public Works Director/Highway Engineer

RELATED DEPARTMENT GOAL:

To provide a safe, well maintained road and bridge system.

ACTION REQUESTED:

The St. Louis County Board is requested to authorize an agreement with the City of Proctor for a 2nd Street reconstruction project.

BACKGROUND:

The City of Proctor wishes to reconstruct 2nd Street in the City of Proctor using Local Road Improvement Program (LRIP) funds and local Proctor funds. St. Louis County has proposed to administer the project since cities fewer than 5,000 in population are not allowed to administer LRIP funds. The City of Proctor shall be responsible for the creation of the plan and specifications, right of way acquisition, and all necessary permitting for the project. The City of Proctor shall be responsible for all costs of the project. The project is described as CP 0000-617698 / SAP 069-596-017. St. Louis County will perform all necessary bidding, contract administration, and will administer the terms of the contract from award to certification of final payment. The City of Proctor will reimburse the County for administration services.

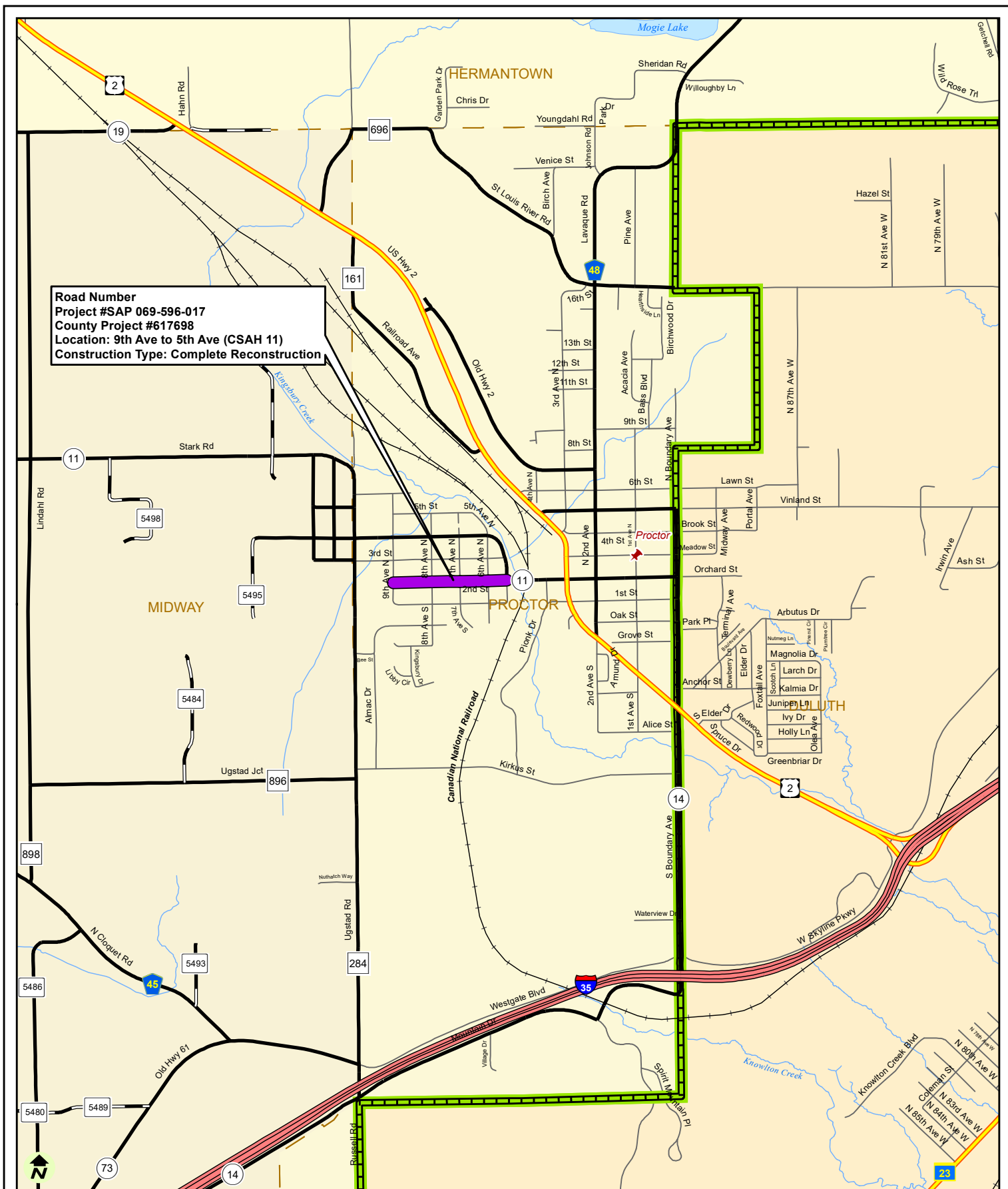
RECOMMENDATION:

It is recommended the St. Louis County Board authorize an agreement with the City of Proctor for the reconstruction of 2nd Street, whereby the City of Proctor will pay the project cost with Local Road Improvement Program (LRIP) funds and local City funds as listed in the Schedule of Prices in the Proposal/Plan Package, and will reimburse St. Louis County for administration services. The funds received from the City of Proctor will be receipted into Fund 220, Agency 220643, Object 551502.

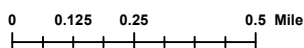
Agreement with the City of Proctor for a 2nd Street Reconstruction Project

BY COMMISSIONER _____

RESOLVED, That the appropriate county officials are hereby authorized to enter into an agreement, and approve any amendments authorized by the County Attorney, with the City of Proctor for the reconstruction of 2nd Street, whereby the City of Proctor will pay the project cost with Local Road Improvement Program (LRIP) funds and local City funds as listed in the Schedule of Prices in the Proposal/Plan Package for the project listed as CP 0000-617698 / SAP 069-596-017, and will reimburse St. Louis County the for administration services as stated in the agreement. The funds received from the City of Proctor will be receipted into Fund 220, Agency 220643, Object 551502.



St. Louis County 2023 Road & Bridge Construction



Map Components

2023 Road & Bridge Construction

- Complete Reconstruction
- Interstate Highway
- U.S./State Highway

- County Road - Paved
- County Road - Gravel
- Local Road/City Street
- Railroad
- Commissioner District

- Township Boundary
- City/Town
- Lake
- River/Stream

BOARD LETTER NO. 21 - 308

FINANCE & BUDGET COMMITTEE CONSENT NO. 4

BOARD AGENDA NO.

DATE: July 13, 2021 **RE:** Abatement List for Board Approval

FROM: Kevin Z. Gray
County Administrator

Mary Garness, Director
Public Records & Property Valuation

David L. Sipila
County Assessor

RELATED DEPARTMENT GOAL:

The County Assessor will meet all state mandates for classifying and valuing taxable parcels for property tax purposes as outlined in Minn. Stat. § 270 through 273.

ACTION REQUESTED:

The St. Louis County Board is requested to approve the list of applications for abatement dated July 27, 2021.

BACKGROUND:

The intent of abatements is to provide equitable treatment to individual taxpayers while at the same time exercising prudence with the tax monies due to the taxing authorities within St. Louis County. Abatements are processed in conformance with St. Louis County Board Resolution No. 16-82, dated January 26, 2016, outlining the Board's policy on abatement of ad valorem taxes. This Policy provides direction for the abatement of: 1) Current year taxes; 2) Current year penalty and costs; 3) Past year taxes; and 4) Past year penalty, interest, and costs.

RECOMMENDATION:

It is recommended that the St. Louis County Board approve the list of applications for abatement dated July 27, 2021.

Abatement List for Board Approval

BY COMMISSIONER _____

RESOLVED, That the St. Louis County Board approves the applications for abatement, correction of assessed valuations and taxes plus penalty and interest, and any additional accrual, identified in County Board File No. 61426.



Abatements Submitted for Approval by the St. Louis County Board

July 27, 2021

AUD. NO.	PARCEL ID	TAXPAYER NAME	LOCATION	APPRAISER	REASON	TAX YR.	REDUCTION
000404	400-0010-00110	BERGERON, CHRISTOPHER & AMELIA	INDUSTRIAL	JON OSTERBERG	HOMESTEAD	2021	\$466.00
000402	340-0172-00090	CORBIN, BRENDA	FAYAL	NICOLE FELTEN	HOMESTEAD	2021	\$544.00
000397	010-0134-00760	KOLBERG, SUSAN	DULUTH	AL PARRENT	HOMESTEAD	2021	\$296.00
000408	060-0031-00080	NORTH SLC HABITAT FOR HUMANITY	GILBERT	DAVE SIPILA	EXEMPT	2021	\$194.00
000409	060-0031-00090	NORTH SLC HABITAT FOR HUMANITY	GILBERT	DAVE SIPILA	EXEMPT	2021	\$164.00
000410	141-0040-00011	NORTH SLC HABITAT FOR HUMANITY	HIBBING	DAVE SIPILA	EXEMPT	2021	\$512.00
000400	060-0041-00110	OLSON, ROY	GILBERT	NICOLE FELTEN	HOMESTEAD	2021	\$702.00
000398	010-2820-01590	PETERS, JOSEPH	DULUTH	JOHN STAINE	HOMESTEAD	2021	\$366.00
000407	725-0010-00830	RATLIFF, FRANK & VERONICA	UNORG 60-19	SHAUN HAINEY	VALUATION	2021	\$210.00
000399	020-0010-00140	SCHMIDT, PATRICIA	CHISHOLM	JOHN PETERSON	HOMESTEAD	2021	\$382.00
000401	340-0160-00350	SORCAN, JOSEPH JR	FAYAL	NICOLE FELTEN	VALUATION	2021	\$350.00
000406	713-0015-01910	VESEL, JOSEPH & LYNNE	UNORG 60-18	SHAUN HAINEY	HOMESTEAD	2021	\$406.00
000403	355-0010-04565	WENDT, DELROY JR & KATHERINE	FINE LAKES	JON OSTERBERG	HOMESTEAD	2021	\$590.00
000405	525-0020-00970	WRIGHT, JACLYN	SANDY	SHAUN HAINEY	VALUATION	2021	\$172.00

BOARD LETTER NO. 21 - 309

CENTRAL MANAGEMENT & INTERGOVERNMENTAL COMMITTEE CONSENT NO. 5

BOARD AGENDA NO.

DATE: July 13, 2021

RE: Granting of Easement to
Lonson Properties, LLC

FROM: Kevin Z. Gray
County Administrator

RELATED DEPARTMENT GOAL:

To manage Public Works facilities and properties.

ACTION REQUESTED:

The St. Louis County Board is requested to authorize the granting of an easement to Lonson Properties, LLC over property owned jointly by the County and the City of Hibbing.

BACKGROUND:

Hilligoss Chevrolet, Inc. ("Hilligoss") owned and operated Ranger Chevrolet in Hibbing for a number of years. At some point during its ownership, Hilligoss encroached on property jointly owned by St. Louis County, the City of Hibbing, and the State of Minnesota on which the Hibbing Joint Public Works facility is located by extending its parking lot onto the publicly-owned land.

Hilligoss's encroachment was discovered when it was preparing to sell its property and business interests to Lonson Properties, LLC. Because the State of Minnesota was not able to grant an easement, the State transferred its interest in the burdened property to the City of Hibbing. Therefore, the City now owns an undivided 2/3 interest in the burdened property, while the County owns the other undivided 1/3 interest.

If the County Board approves, the County will execute an easement to Hilligoss's successor in interest, Lonson Properties, LLC, for the burdened property, which is comprised of approximately 0.63 acres. The County's charge for the granting of the easement is proposed to be \$1,983.45, which is based on the property's assessed value.

RECOMMENDATION:

It is recommended that the St. Louis County Board authorize the granting of an easement to Lonson Properties, LLC to correct an encroachment of its dealership parking lot onto publicly-owned land.

Granting of Easement to Lonson Properties, LLC

BY COMMISSIONER: _____

WHEREAS, For many years, Hilligoss Chevrolet, Inc. owned and operated Ranger Chevrolet in Hibbing; and

WHEREAS, During its ownership, Hilligoss encroached on property jointly owned by St. Louis County, the City of Hibbing, and the State of Minnesota on which the Hibbing Joint Public Works facility is located by extending its parking lot onto the publicly-owned land; and

WHEREAS, Hilligoss's encroachment was discovered when it was preparing to sell its property and business interests to Lonson Properties, LLC; and

WHEREAS, Lonson Properties, LLC would like to acquire an easement to correct the encroachment; and

WHEREAS, Because the State was unable to grant an easement, the State transferred its ownership interest in the burdened property to the City of Hibbing; and

WHEREAS, The County and Hibbing are prepared to execute an easement allowing Lonson Properties, LLC to maintain its parking lot over the burdened property.

THEREFORE, BE IT RESOLVED, That the St. Louis County Board authorizes the appropriate county officials to execute an easement, and make any amendments approved by the County Attorney, to Lonson Properties, LLC, the legal description of which is set forth in County Board File No. _____; and

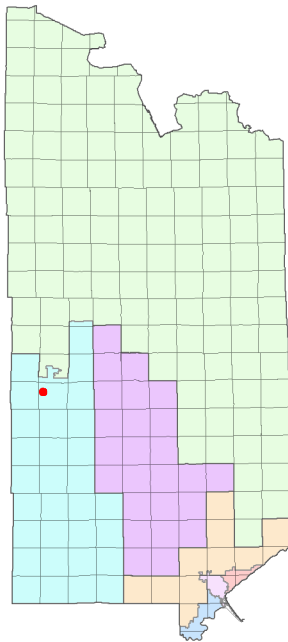
RESOLVED FURTHER, That the execution of such easement is contingent upon the county's receipt of \$1,983.45, which shall be deposited into Fund 200, Agency 205003, Object 583100.



SAINT LOUIS COUNTY MINNESOTA

Easement Request

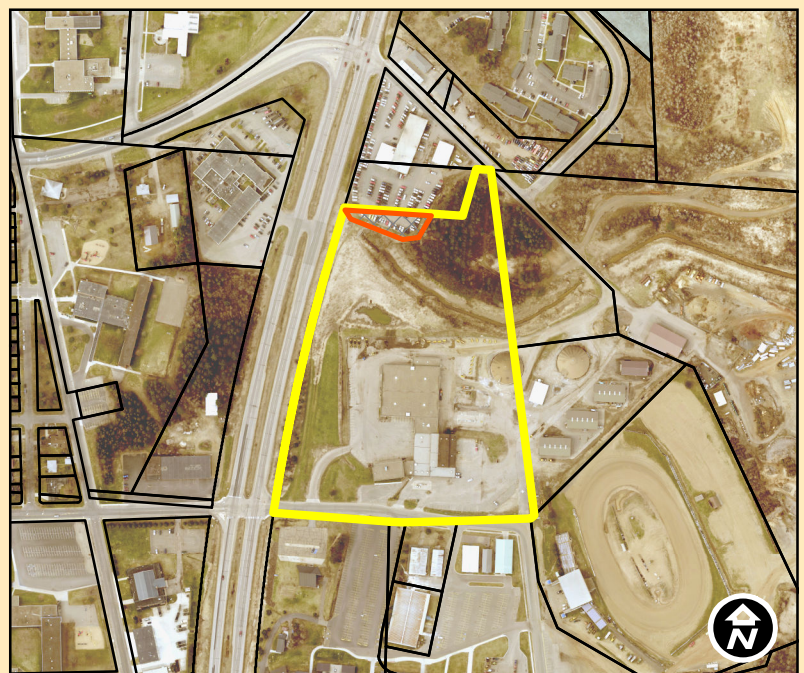
Affected Parcels: 140-0270-00697



St. Louis County District Map

- District 1
- District 2
- District 3
- District 4
- District 5
- District 6
- District 7

This drawing is neither a legally recorded map nor a survey and is not intended to be used as such. This drawing is a compilation of recorded information and data located in various city, county, state and federal offices. St. Louis County is not responsible for any incorrectness herein.



- Easement from County
- County Fee Property

BOARD LETTER NO. 21 - 310

ENVIRONMENTAL & NATURAL RESOURCES COMMITTEE CONSENT NO. 6

BOARD AGENDA NO.

DATE: July 13, 2021

RE: Request for Free Conveyance
of State Tax Forfeited Land to
St. Louis County – Integrated
Waste Management Facility

FROM: Kevin Z. Gray
County Administrator

Julie Marinucci, Director
Land and Minerals

David Fink, Interim Director
Environmental Services

RELATED DEPARTMENT GOAL:

To perform public services.

ACTION REQUESTED:

The St. Louis County Board, at the request of the Environmental Services Department, is asked to seek the conveyance of approximately 800 acres of state tax forfeited land for the integrated waste management facility in Canyon pursuant to Minn. Stat. § 282.01.

BACKGROUND:

The Environmental Services Department would like to have approximately 800 acres of state tax forfeited land converted into county fee land for use as part of the integrated waste management facility in Canyon. The facility is expected to serve communities in the region.

The first step of this process is for the County to pass a resolution requesting that state tax forfeited land be conveyed to the County so that it may own the land in fee.

Pursuant to Minn. Stat § 282.01, Subd. 1a(e), non-conservation state tax forfeited land may be conveyed by the Commissioner of Revenue to a governmental subdivision for an authorized public use with the favorable recommendation of the County Board.

Because development and operation of a public sanitation facility is an authorized public use, no monetary compensation or consideration is required for the conveyance. All

property conveyed under a conditional use deed by the Commissioner of Revenue pursuant to this statutory provision is released from the use restriction and the possibility of reversion 30 years from the date the deed is acknowledged.

If this resolution passes, the Land and Minerals Department will undertake its statutory obligations to properly classify and prepare the state tax forfeited lands for conveyance. Upon successful completion of those obligations, the County Board, acting as the administrator of state tax forfeited lands, will consider a second resolution making a favorable recommendation regarding the conveyance.

If the second resolution passes, the Land and Minerals Department will then include both resolutions in its application to the Commissioner of Revenue for conveyance of these lands to the County.

RECOMMENDATION:

It is recommended that the St. Louis County Board seek the conveyance of these parcels of state tax forfeited land, with the application fee of \$250 payable from Fund 600, Agency 608001, Object 669200.

**Request for Free Conveyance of State Tax Forfeited Land to St. Louis County –
Integrated Waste Management Facility**

BY COMMISSIONER _____

WHEREAS, The County Board, at the request of the Environmental Services Department, seeks to have approximately 800 acres of state tax forfeited land converted into county fee land for use as part of the integrated waste management facility in Canyon; and

WHEREAS, Pursuant to Minn. Stat. 282.01, Subd. 1a(e), nonconservation tax-forfeited land may be conveyed without monetary compensation or consideration to a governmental subdivision for an authorized public use.

THEREFORE, BE IT RESOLVED, That the St. Louis County Board hereby requests, pursuant to Minn. Stat. § 282.01, Subd. 1a(e), a free conveyance of the state tax forfeited parcels described in County Board File No. _____ for use as part of an integrated waste management facility, with the \$250 application fee payable from Fund 600, Agency 608001, Object 669200.



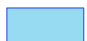




St. Louis County Land & Minerals Department Tax Forfeited Land Sales

Free Conveyance

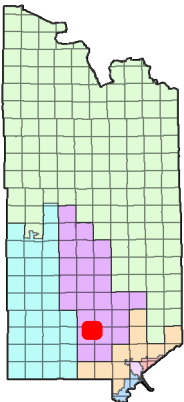
Legal : Sections 1, 2, 11, 12
T52N R17W

Parcel Codes : 475-0010-00170
475-0010-00280
475-0010-01650
475-0010-01810
475-0010-00010

Acres: Approximately 800

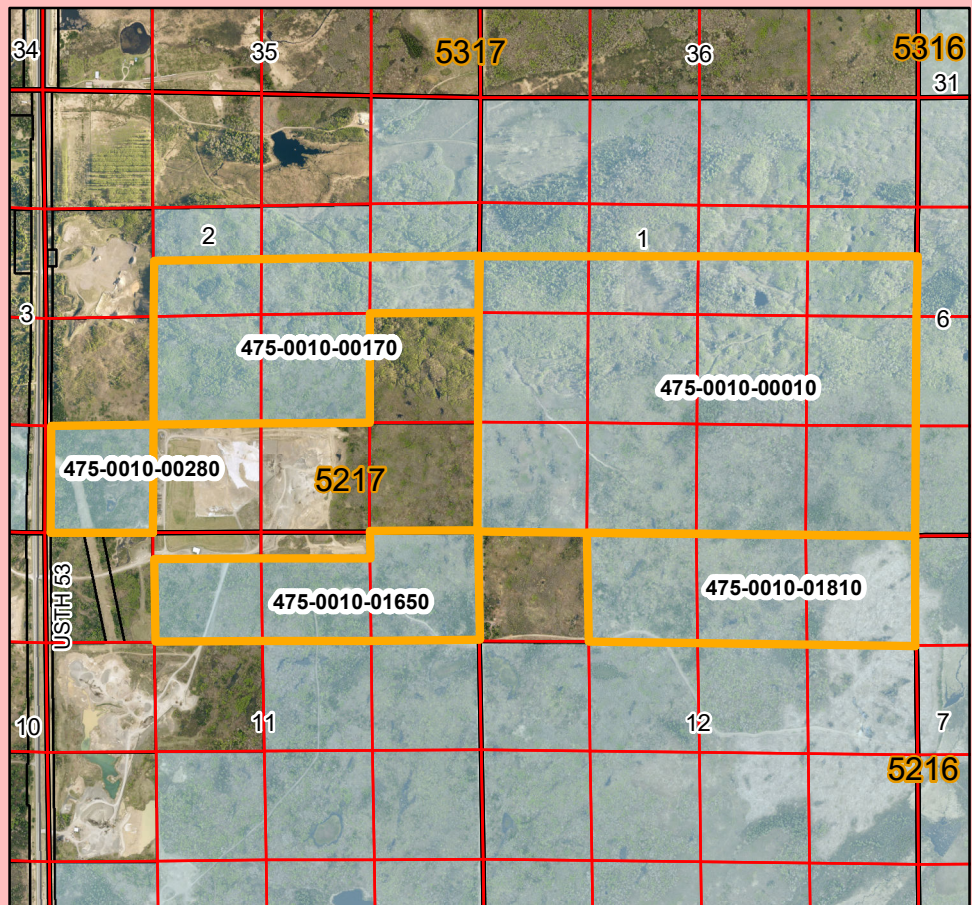
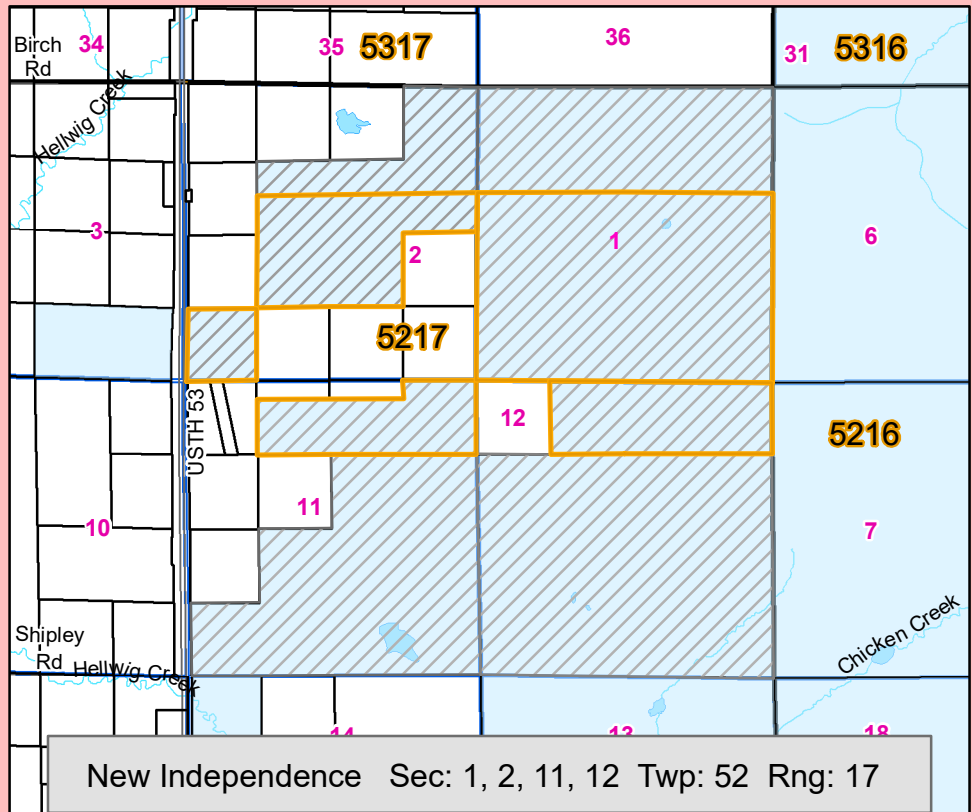
-  Water
-  Road
-  Tract
-  Area of Interest
-  State Tax Forfeited Land

Commissioner
District # 6



This drawing is neither a legally recorded map nor a survey and is not intended to be used as such. This drawing is a compilation of recorded information and data located in various city, county, state and federal offices. St. Louis County is not responsible for any incorrectness herein.

2021



SLC Integrated Waste Management Facility at Canyon

Parcel ID	Legal Description			Approx Acres
475-0010-00170	S1/2 SE NW	Section 2	T52N-R17W	20
	S1/2 SW NE	Section 2	T52N-R17W	20
	S1/2 SE NE	Section 2	T52N-R17W	20
	NE SW	Section 2	T52N-R17W	40
	NW SE	Section 2	T52N-R17W	40
475-0010-00280	SW SW	Section 2	T52N-R17W	37.69
475-0010-01650	Part of NE NW	Section 11	T52N-R17W	30
	Part of NW NE	Section 11	T52N-R17W	30
	NE NE	Section 11	T52N-R17W	40
475-0010-01810	NENW	Section 12	T52N-R17W	40
	NW NE	Section 12	T52N-R17W	40
	NENE	Section 12	T52N-R17W	40
475-0010-00010	S1/2 SW NW	Section 1	T52N-R17W	20
	S1/2 SE NW	Section 1	T52N-R17W	20
	S1/2 SW NE	Section 1	T52N-R17W	20
	S1/2 SE NE	Section 1	T52N-R17W	20
	SW	Section 1	T52N-R17W	160
	SE	Section 1	T52N-R17W	160
Total				797.69

BOARD LETTER NO. 21 – 311

CENTRAL MANAGEMENT & INTERGOVERNMENTAL COMMITTEE NO. 1

BOARD AGENDA NO.

DATE: July 13, 2021

RE: St. Louis County Diversity,
Equity and Inclusion
Leadership Group – Award of
Proposal to Center for
Economic Inclusion

FROM: Kevin Z. Gray
County Administrator

James R. Gottschald, Director
Human Resources and Administration

RELATED DEPARTMENT GOAL:

To exercise responsible stewardship of county resources.

ACTION REQUESTED:

The St. Louis County Board is requested to accept the Diversity, Equity and Inclusion (DEI) strategic planning services proposal submitted by the Center for Economic Inclusion of St. Paul, Minnesota in the amount of \$149,200.

BACKGROUND:

During 2020, County Administration established a Diversity, Equity and Inclusion (DEI) Leadership Group in recognition that diversity, equity and inclusion are vital to achieving the mission of St. Louis County - to promote health and safety, ensure sound infrastructure, embrace our natural resources, and support an environment where communities prosper.

Work performed to develop diversity initiatives over the years has taken many forms in the county. It was decided to establish the DEI Leadership Group made up of department heads and high-level managers to further advance organizational DEI work as well as review resident services across all lines of county business through a diversity, equity and inclusion lens. This group was further joined by members of the Black, Indigenous, and People of Color (hereinafter referred to as BIPOC) peer support group. The BIPOC peer support group was initially formed in response to recent tragedies involving BIPOC individuals in Minnesota and elsewhere in the United States but continues to meet for the purpose of providing support to each other (which helps

with retention) and also to work on opportunities to improve diversity, equity and inclusion within St. Louis County.

As the newly formed DEI Leadership Group met and began developing its mission, vision, values, and strategic planning, it was determined by the group that the county and its residents would benefit from engaging a consulting partner who specialized in this space and in the performance of DEI initiative work.

The DEI Leadership Group worked closely with the Purchasing Division of Administration in conducting a Request for Quotes. The proposed scope of work included providing subject matter expertise to assist in the establishment and implementation of overall DEI vision, mission, values and goals and development of a comprehensive strategy to accomplish these goals and providing recommendations and consultation to create action plans that integrate DEI best practices into organizational strategies and objectives.

A total of six consulting firms were interviewed. The top two finalist consulting firms were interviewed a second time. At the conclusion of the process, the Center for Economic Inclusion was selected because of their unique structure, innovation, ability to drive economic equity and overall value.

The Center for Economic Inclusion specializes in advancing inclusive organizational growth and has extensive experience in leading racial equity and inclusion work focused on closing racial wealth gaps. The Center for Economic Inclusion supports employers in driving and sustaining systemic change and elevate individuals' voices and experiences by using an established set of indicators of household financial security and inclusive regional economic growth. The DEI work within the county will have a dual focus of improving the experiences BIPOC as employees in our own workforce and/or citizens who purchase or obtain services through one or more of the many lines of business of the county. This includes developing strategies for inclusive economic growth. The cost of the proposed 16-month consulting services agreement is \$149,200.

RECOMMENDATION:

It is recommended that the St. Louis County Board accept the DEI strategic planning services proposal submitted by the Center for Economic Inclusion and authorize the appropriate county officials to enter into an agreement with the Center for Economic Inclusion for DEI consulting services.

**St. Louis County Diversity, Equity and Inclusion Leadership Group – Award of
Proposal to Center for Economic Inclusion**

BY COMMISSIONER_____

WHEREAS, County Administration established a Diversity, Equity and Inclusion Leadership Group in recognition that diversity, equity and inclusion are vital to achieving the mission of St. Louis County - to promote health and safety, ensure sound infrastructure, embrace our natural resources, and support an environment where communities prosper; and

WHEREAS, It was determined that the county and its residents would benefit from engaging a consulting partner who specialized in diversity, equity and inclusion strategic planning and in the performance of this type of organizational and economic development community engagement work to ensure the inclusive and equitable support of all county employees and residents; and

WHEREAS, At the conclusion of a Request for Quotes procurement process, it was determined that the Center for Economic Inclusion offered the best alternative in terms of their unique structure, innovation, ability to drive economic equity and overall value.

THEREFORE, BE IT RESOLVED, That the St. Louis County Board accepts the diversity, equity and inclusion strategic planning services proposal submitted by the Center for Economic Inclusion of St. Paul, Minnesota in the amount of \$149,200 payable from Fund 100, Agency 104001, Object 629900 and authorizes the appropriate county officials to enter into an agreement with the Center for Economic Inclusion for consulting services.

BOARD LETTER NO. 21 - 312

CENTRAL MANAGEMENT & INTERGOVERNMENTAL COMMITTEE NO. 2

BOARD AGENDA NO.

DATE: July 13, 2021

**RE: Committee Vacancy
Appointment to the Board of
Adjustment**

FROM: Kevin Z. Gray
County Administrator

**Matthew E. Johnson, Director
Planning and Community Development**

RELATED DEPARTMENT GOAL:

To administer county ordinances and state regulations pertaining to land use in the most effective and efficient manner.

ACTION REQUESTED:

The St. Louis County Board is requested to appoint one individual to the St. Louis County Board of Adjustment to fill a vacancy.

BACKGROUND:

In 2013, the County began looking at efficiencies in having citizen members serve on both the Planning Commission and Board of Adjustment. The two boards remain separate, but meetings are held on the same day.

Sonya Pineo, Planning Commission and Board of Adjustment member, submitted her letter of resignation to the secretary of the Board of Adjustment. There are four (4) applications for the Board of Adjustment to fill out the remainder of Sonya Pineo's term ending December 31, 2023:

- Daniel Manick, who is currently serving as the vice chair on the Planning Commission, is an ISD 2142 School Board member and also served on the Cook City Council, Park and Rec Board, Airport Commission and Library Board.
- William (Tom) Coombe, who previously served on the Community Development Block Grant Citizen's Advisory Committee, the Planning Commission and Board of Adjustment and resigned from both the Planning Commission and Board of Adjustment in 2018.

- Kurt Johnson, who is currently an Alborn Township supervisor and a St. Louis County Sherriff's Rescue Squad member.
- Jennifer Hoffman-Saccoman, a Hibbing City Councilor, who is currently serving on the Community Development Block Grant Citizen's Advisory Committee, RAMS and the Hibbing HRA.

Attached are the individual applications along with maps showing current Board of Adjustment members' and applicants' locations.

RECOMMENDATION:

It is recommended the St. Louis County Board appoint a replacement to the Board of Adjustment for the current vacancy with a term expiring December 31, 2023.

Committee Vacancy Appointment to the Board of Adjustment

BY COMMISSIONER_____

WHEREAS, The St. Louis County Board appoints citizens to serve on the Board of Adjustment; and

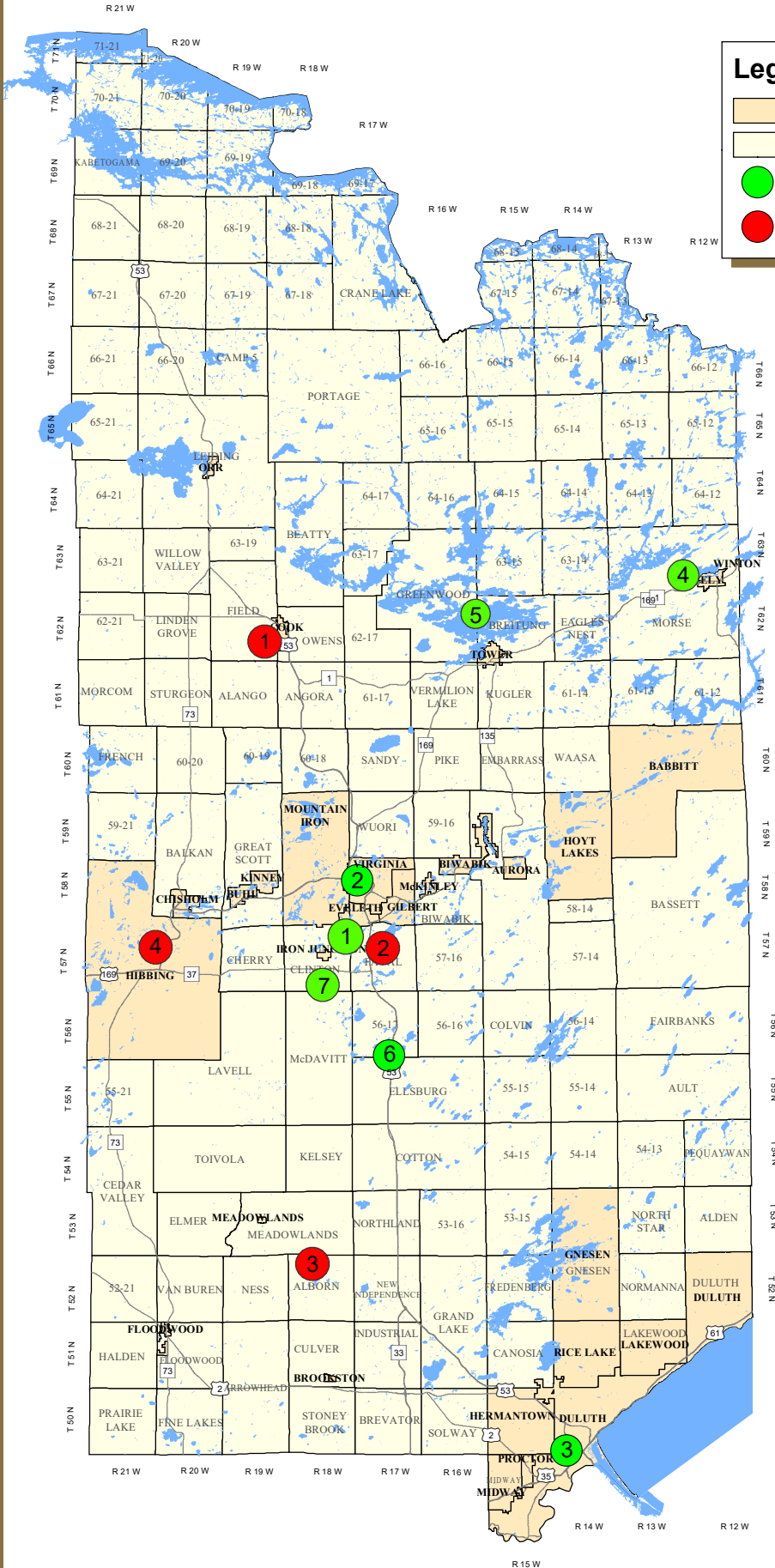
WHEREAS, The Board of Adjustment currently has a vacancy to fill the remainder of the term previously held by Sonya Pineo that will expire on December 31, 2023; and

WHEREAS, There are four (4) applications for filling the vacancy on the Board of Adjustment.

THEREFORE, BE IT RESOLVED, The St. Louis County Board hereby appoints _____ to its Board of Adjustment for the remainder of a term ending December 31, 2023.

Board of Adjustment (BOA) Members

St. Louis County



Legend

- Areas Administered by Local Townships & Cities
- Areas Administered by St. Louis County
- BOA Members
- BOA Applicants

2021 BOA Members

1. Diana Werschay
2. Vacant
3. Steven Filipovich
4. Roger Skraba
5. David Pollock
6. James McKenzie
7. Ray Svatos

Applicants

1. Daniel Manick
2. William (Tom) Coombe
3. Kurt Johnson
4. Jennifer Hoffman-Saccoman

Prepared By: **Planning & Community Development**
(218) 725-5000
www.stlouiscountymn.gov

Source: St. Louis County

Date: 5/18/2021

SE

Disclaimer

This is a compilation of records as they appear in the Saint Louis County Offices affecting the area shown. This drawing is to be used only for reference purposes and the County is not responsible for any inaccuracies herein contained.

Copyright Saint Louis County
All Rights Reserved



St. Louis County MN

Phil Chapman

From:
Sent: Tuesday, April 20, 2021 9:45 AM
To: Phil Chapman
Subject: Application for Citizen Advisory Committee

WARNING: External email. Please verify sender before opening attachments or clicking on links.

Live Form

Application For: Planning Commission and Board of Adjustment

Applicant Name: William (Tom) Coombe

Email: -

Address: Eveleth, Minnesota 55734
United States|US

Phone:

How long have you lived in St. Louis County? 75 years

List other community groups, boards, committees, or commissions for which you are, or have been a member. City of Eveleth Planning Commission, Board of Review, Council Member, and Mayor. St Louis Cty Planning and Board of Adjustment

What interests you about becoming a member of the committee, commission or board for which you are applying? I was a past member for many years.

Please describe your education, employment, areas of interest, and expertise. High School and College - Eveleth,MN. United States Navy-honorably discharged. Politics and Public Service.

Please provide additional information you believe is important in considering your application. I enjoy working with and helping people. I have always been fully prepared for each and every meeting I have ever attended.

Please list two references including name, address, and telephone number. Liz Biondich Eveleth,MN Keith Nelson Fayal,MN

Date: 4-20-2021

Phil Chapman

From:
Sent: Thursday, March 25, 2021 2:30 PM
To: Phil Chapman
Subject: Application for Citizen Advisory Committee

WARNING: External email. Please verify sender before opening attachments or clicking on links.

Live Form

Application For: Board of Adjustment

Applicant Name Kurt Johnson

Email

Address Alborn, Minnesota 55702
United States|US

Phone

How long have you lived in St. Louis County? 64 years, interrupted with a 2-year duration in Minneapolis to go to school.

List other community groups, boards, committees, or commissions for which you are, or have been a member. I am a township supervisor for Alborn Township. 15 years on the St. Louis Co. Sheriff's Rescue Squad

What interests you about becoming a member of the committee, commission or board for which you are applying? Several years ago, I applied for a Land Use Variance and found the process interesting, but also very scary. From the many years I've spent re-building or building new construction, I understand what the applicants are going through. I would like to bring a friendly face to the committee.

Please describe your education, employment, areas of interest, and expertise. I worked for ALLETE for 37 years as an Electrical Technician and Computer Analyst. During that time, I re-built derelict houses and constructed new houses as a side job. As a result, I had many opportunities to deal with local government's building inspector offices. My education is very technical. As an Electronic Technician, I specialized in specific products and devices for the power company. As a Computer Analyst, again my education was very specific to building specialized networks for the power company. My areas of interest and expertise have always been building, from furniture to whole houses, basements to roofing, or the smaller renovation projects.

Please provide additional information you believe is important in considering your application.

Above, I stated the process was very scary. I would like to offset that with a friendly manner and make the process a less scary.

Please list two references including name, address, and telephone number.

Tom Johnson,

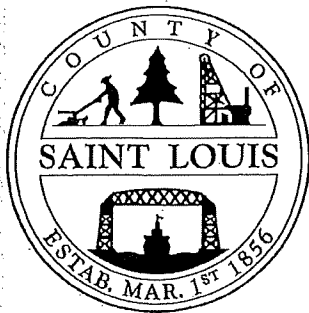
Alborn, MN

/ Reiner Nelson,

West, Duluth, MN

Date

3-25-2021



Revised 1-2006
APP-CACCB

Application

Citizen Advisory Committee, Commission, or Board
St. Louis County

Return Application to:

Clerk of the County Board
100 N. 5th Avenue West, #214
Duluth, MN 55802-1293

OR e-mail at: chapmanp@stlouiscountymn.gov

Note: Please mail or deliver your completed application to the Clerk of the Board at the adjacent address. Your application will be on file for approximately one year.

Application For:

Board of Adjustment

Please list the committee, commission, or board for which you are applying

Applicant Name:

Manick Daniel B

☒ Mr. ☐ Mrs. ☐ Ms.

Last Name

First Name

Middle Initial

Home Address:

Street

Cook Mn 55723

City

State

Zip

Telephone/Fax/
E-Mail:

Home

Work

Fax

E-mail Address

1. How long have you lived in St. Louis County?

43 years

2. List other community groups, boards, committees, or commissions for which you are, or have been a member?

Previous Public Service: Cook City Council for 8 years. While I was on Council, I served on Park and Rec Board, Airport Commission and Library Board. Also served as a Board Member for Cook youth hockey, President of Cook Area Youth Baseball for 15 years. Currently in my 6th year as School Board member for ISD 2142(St. Louis County Schools). I served 2 years as Clerk and in my 3rd year as Board Chair. As a Board member I have had a seat on various committees, MSHL representative, Curriculum Committee, MIB Collaboration Committee and Indian Ed Advisory Board. I have been on St. Louis County Planning and Zoning Commission since February of 2019 and am currently Vice-Chair. I have been a member of Indepent Union of Operating Engineers Local 49 for 33 years.

3. What interests you about becoming a member of the committee, commission or board for which you are applying?

I've always had an interest in Public Service and enjoyed my years on Cook City Council as well as my time on School Board. The short time I've been on St. Louis County Planning and Zoning has been extremely fascinating, especially with our new Short Term Rental issues we are addressing. I've been reading the Board of Adjustment minutes for the last few years and would appreciate the opportunity to serve the residents of St. Louis County on the BOA as well. In my current job as Business Representative for IUOE Local 49, I deal with conflict resolution on a daily basis. This Commission fits right in line with what I deal with on a daily basis.

4. Please describe your education, employment, areas of interest, and expertise.

High School graduate from Orr High School and took a few college courses while I was working at Minntac. Worked for a logger right out of High School and after a few years of that I was hired at Minntac, was laid off there and went right to work for Eveleth Taconite for 2 years. I was laid off there and spent 31 years as a Heavy Equipment Operator for Koochiching County. Two years ago was hired by Local 49 as a Business Representative and I represent Public Sector members of Local 49 in Northeast Minnesota.

5. Please provide additional information you believe is important in considering your application?

I have always felt a strong need to serve the public, whether it was coaching youth sports or serving on City Council or School Board. Planning and Zoning has allowed me to serve the public in a different capacity than my elected positions. I was humbled and honored when the St. Louis County Board appointed me to fill an open seat on the P and Z Board in early 2019 and this past December, they passed a resolution to keep me on that Board.

6. Please list two references including name, address, and telephone number.

Walt Buller 1

William King

I have sufficient time to devote to this responsibility and will attend the required meetings if appointed.

Signature:

Daniel B. Mank

Date

April 22, 2021

THANK YOU!

Page 2 of 2

Office Use Only

Date Received

Appointment Date

Date Entered

Term End Date

Commissioner District

Retention Date

Appointed: ☐ Yes ☐ No

Committee/Board/Commission:

Phil Chapman

From:
Sent: Wednesday, March 31, 2021 12:06 PM
To: Phil Chapman
Subject: Application for Citizen Advisory Committee

WARNING: External email. Please verify sender before opening attachments or clicking on links.

Live Form

Application For: Board of Adjustments / Citizen Advisory Committee

Applicant Name: Jennifer Saccoman

Email:

Address: Hibbing, MN 55746
United States|US

Phone:

How long have you lived in St. Louis County? 25 years

List other community groups, boards, committees, or commissions for which you are, or have been a member. Currently, I am an advisory board member of the Community Development Block Grant (CDBG) program - second term. Hibbing City Councilor - Ward 3 Range Association of Municipalities & Schools Hibbing Economic & Development Authority

What interests you about becoming a member of the committee, commission or board for which you are applying? To learn more about variances that are being brought forth on behalf of SLC citizens. To assist in making well-informed decisions that is in the best interest of all parties, including SLC.

Please describe your education, employment, areas of interest, and expertise.

I am an elected official - Hibbing City Councilor - Ward 3. I was elected to my first term in 2012 - taking office in Jan., 2013. I am currently an advisory board member of the CDBG program. My second term ends at the end of 2022. This has been an exceptional experience in working with other committee members throughout SCL. I am the executive director of the Hibbing Foundation, an affiliate of Saint Paul & Minnesota Foundation for the past 21 years. In this capacity, I help raise charitable dollars (endowment funds) for the community foundation. I work closely with the non-profit community. I am also a voting member of RAMS and appointed to the Hibbing Economic Development Authority. I have also served as Acting Mayor, as appointed by Mayor Rick Cannata

Please provide additional information you believe is important in considering your application. I pride myself as being fair, equitable and transparent. I take a solution orientation to problem solving. I am comfortable in making hard decisions. I take the necessary steps in being prepared and doing my due-diligence on each topic. I enjoy working in a group setting and learning from my peers and staff.

Please list two references including name, address, and telephone number. Mayor Rick Cannata City of Hibbing
Director Jackie Prescott Hibbing HRA Exec.

Date 3-31-2021

BOARD LETTER NO. 21 - 313

**CENTRAL MANAGEMENT & INTERGOVERNMENTAL
COMMITTEE NO. 3**

BOARD AGENDA NO.

DATE: July 13, 2021

**RE: Committee Vacancy
Appointment to the Planning
Commission**

FROM: Kevin Z. Gray
County Administrator

**Matthew E. Johnson, Director
Planning and Community Development**

RELATED DEPARTMENT GOAL:

To administer county ordinances and state regulations pertaining to land use in the most effective and efficient manner.

ACTION REQUESTED:

The St. Louis County Board is requested to appoint one individual to the St. Louis County Planning Commission to fill a vacancy.

BACKGROUND:

In 2013, the County began looking at efficiencies in having citizen members serve on both the Planning Commission and Board of Adjustment. The two boards remain separate, but meetings are held on the same day.

Sonya Pineo, Planning Commission and Board of Adjustment member, submitted her letter of resignation to the secretary of the Planning Commission. There are four (4) applications for the Planning Commission to fill out the remainder of Sonya Pineo's term ending December 31, 2023:

- James (Pat) McKenzie, currently serving on the Community Development Block Grant Citizen's Advisory Committee and the Board of Adjustment.
- William (Tom) Coombe, who previously served on the Community Development Block Grant Citizen's Advisory Committee, the Planning Commission and Board of Adjustment and resigned from both the Planning Commission and Board of Adjustment in 2018.
- Richard Pierce, who is currently serving on CEC, AMFA, VINE, Paul Bunyan Ag and Gilbert Rec.

- Candi Mock, who has experience serving as a volunteer on various community groups such as The River Church Duluth youth group, Duluth Community Food Outreach and the Damiano Center Parking Lot group.

Attached are the individual applications along with maps showing current Planning Commission members' and applicants' locations.

RECOMMENDATION:

It is recommended the St. Louis County Board appoint a replacement to the Planning Commission for the current vacancy with a term expiring December 31, 2023.

Committee Vacancy Appointment to the Planning Commission

BY COMMISSIONER_____

WHEREAS, The St. Louis County Board appoints citizens to serve on the Planning Commission; and

WHEREAS, The Planning Commission currently has a vacancy to fill the remainder of the term previously held by Sonya Pineo that will expire on December 31, 2023; and

WHEREAS, There are four (4) applications for filling the vacancy on the St. Louis County Planning Commission.

THEREFORE, BE IT RESOLVED, The St. Louis County Board hereby appoints _____ to its Planning Commission for the remainder of a term ending December 31, 2023.

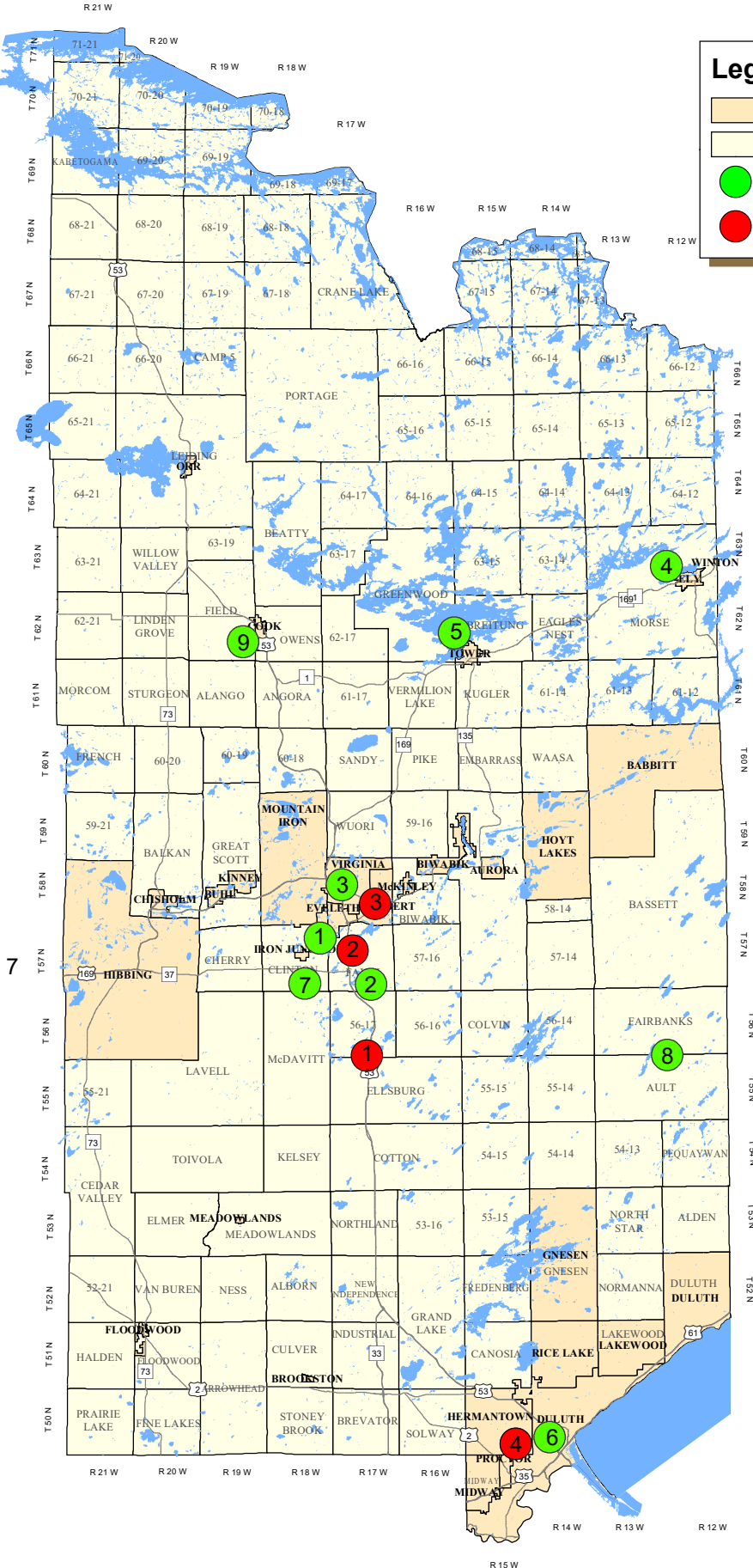
Planning Commission (PC) Members

St. Louis County



Legend

- Areas Administered by Local Townships & Cities
- Areas Administered by St. Louis County
- PC Members
- PC Applicants



PC Members:

1. Diana Werschay
2. Commissioner Keith Nelson
3. Vacant
4. Roger Skraba
5. David Pollock
6. Steven Filipovich
7. Ray Svatos
8. Dave Anderson
9. Daniel Manick

Applicants:

1. James (Pat) McKenzie
2. William (Tom) Coombe
3. Richard Pierce
4. Candi Mock

Prepared By: **Planning & Community Development**
(218) 725-5000
www.stlouiscountymn.gov

Source: St. Louis County

Date: 5/18/2021

SE

Disclaimer

This is a compilation of records as they appear in the Saint Louis County Offices affecting the area shown. This drawing is to be used only for reference purposes and the County is not responsible for any inaccuracies herein contained.

Copyright Saint Louis County
All Rights Reserved



St. Louis County MN

Phil Chapman

From:
Sent: Tuesday, April 20, 2021 9:45 AM
To: Phil Chapman
Subject: Application for Citizen Advisory Committee

WARNING: External email. Please verify sender before opening attachments or clicking on links.

Live Form

Application For: Planning Commission and Board of Adjustment

Applicant Name: William (Tom) Coombe

Email:

Address: Eveleth, Minnesota 55734
United States|US

Phone:

How long have you lived in St. Louis County? 75 years

List other community groups, boards, committees, or commissions for which you are, or have been a member. City of Eveleth Planning Commission, Board of Review, Council Member, and Mayor. St Louis Cty Planning and Board of Adjustment

What interests you about becoming a member of the committee, commission or board for which you are applying? I was a past member for many years.

Please describe your education, employment, areas of interest, and expertise. High School and College - Eveleth,MN. United States Navy-honorably discharged. Politics and Public Service.

Please provide additional information you believe is important in considering your application. I enjoy working with and helping people. I have always been fully prepared for each and every meeting I have ever attended.

Please list two references including name, address, and telephone number. Liz Biondich } Keith Nelson F

Date: 4-20-2021

Phil Chapman

From:
Sent: Monday, May 3, 2021 4:59 PM
To: Phil Chapman
Subject: Application for Citizen Advisory Committee

WARNING: External email. Please verify sender before opening attachments or clicking on links.

Live Form

Application For:	Planning Commission
Applicant Name	James McKenzie
Email	
Address	Eveleth, MN 55734 United States US
Phone	
How long have you lived in St. Louis County?	62 Years
List other community groups, boards, committees, or commissions for which you are, or have been a member.	St Louis County Board of Adjustment, St Louis County Community Development Block Grant Citizen's Advisory Committee, Camp Esquagama Board of Directors, Past president, Association of Training Officers of Minnesota, past member Central Lakes Volunteer Fire Department.
What interests you about becoming a member of the committee, commission or board for which you are applying?	I am interested in land use and planning issues. My time as a member of the Board of Adjustment and my attendance at Planning Commission meetings has exposed me to issues that come in front of the Planning Commission.
Please describe your education, employment, areas of interest, and expertise.	Associates Degree, Mesabi Community College, 1978, Urban Studies Major, University of MN Duluth, 1978-1979, (not finished), Deputy sheriff, St Louis County Sheriff's Office, 1979 -2015, St Louis County Board of Adjustment, 2019-present. I am a U.S. Air Force veteran.
Please provide additional information you believe is important in considering your application.	I have attended every Planning Commission meeting since December 2018 in an effort to learn about St Louis County planning issues. I have an extensive knowledge of the land areas of St Louis County gained through my experience as a deputy sheriff.

Please list two references including Jeffery Borgos,
name, address, and telephone Wade Schottmuller,
number.

Date 5-3-2021

Phil Chapman

From:
Sent: Friday, May 7, 2021 1:18 PM
To: Phil Chapman
Subject: Application for Citizen Advisory Committee

WARNING: External email. Please verify sender before opening attachments or clicking on links.

Live Form

Application For: St. Louis County Planning Commission

Applicant Name Candi Mock

Email

Address Hermantown, MN 55811
United States|US

Phone

How long have you lived in St. Louis County? 22 Years.

List other community groups, boards, committees, or commissions for which you are, or have been a member. Current: regular volunteer, Youth group, The River Church Duluth. Current: regular volunteer, Duluth Community Food Outreach, Damiano Center Parking Lot. Past: Lake Superior College Civil Engineering Technology Program Advisory Committee. Past: Barr Engineering volunteer groups-Adopt-A-Highway, Dragon Boat Festival, YMCA sidewalk shuffle.

What interests you about becoming a member of the committee, commission or board for which you are applying? I have practiced giving back to my community. The responsibilities of the Planning Commission align with my work experience. I can see how I'd be able to combine my volunteer attitude with my work experience in a way that benefits St. Louis County, and represents our demographics.

Please describe your education, employment, areas of interest, and expertise. Education: AAS Civil Engineering Technology, Lake Superior College. Work experience: multiple facets of small government at the City of Cook, MN, City of Duluth Engineering Department. MnDot: I currently work in road design. This requires technical skills of course, considering how any design element affects the entire project. My favorite activity is research. My job has elements of research on this history of an area, research on new design practices, past similar projects for comparison, and of course standard best practices, what is "allowed" or not.

Please provide additional information you believe is important in considering your application. I live in Hermantown, am familiar with Duluth. My time living in Cook and my family roots on the range have helped me develop an appreciation for the needs of our smaller communities. St. Louis County is large, diverse. You can count on me to have a cooperation mindset.

Please list two references including name, address, and telephone number. Chris Morris, Cybelle Nelson

Date 5-7-2021

Phil Chapman

From:
Sent: Saturday, April 10, 2021 8:36 PM
To: Phil Chapman
Subject: Application for Citizen Advisory Committee

WARNING: External email. Please verify sender before opening attachments or clicking on links.

Live Form

Application For: CAC Board

Applicant Name richard pierce

Email

Address gilbert, MN 55741
United States|US

Phone

How long have you lived in St. Louis County? 31 yrs

List other community groups, boards, committees, or commissions for which you are, or have been a member. CEC, AMFA, VINE, Paul Bunyan Ag, Gilbert Rec,

What interests you about becoming a member of the committee, commission or board for which you are applying? Housing programs and the new theories on future homes. learning about programs that work to assist people, building a stronger community that sees people trying to renter the community as an asset that can help us move forward. Providing very much needed housing for future generations. Build community space that see the whole life. Education, training, health, employment and hope.

Please describe your education, employment, areas of interest, and expertise. UMD Grad BSU Education vocation A&P mechanic Business owner Renewable energy advocate

Please provide additional information you believe is important in considering your application. Sustainable farmer as long as I continue to work to pay to farm!! Potato Farmer and reluctant sheep hand Understand the mechanics of achieving goals through grants and community support.

Please list two references including name, address, and telephone number. Frank Jewell 1st district commissioner Keith Nelson 6th district commissioner Kathy Vraa ISD 2142

Date

4-10-2021