

Resource Data Appraisal Form

Sale: C22-611815

C19220112

Appraisal Date: 11/28/2022

Expiration Date: 4/15/2023

Office: Cook

Blocks: 1

Legal Description

Sec Twp Rge
15 61 18

Cruisers %
Casey Anderson 100

Total Block Acres

Block Acres
1 8.8

Stand Info

Stand Type Volume BA DBH Stand Age
1 ASPEN 270 138 11.4

SI Sp SI Age SI
ASPEN 62 57

Sale Acres

Block Stand Acres
1 1 8.8
Total Acres 8.8

Species	No Bid	Prod	Unit	Unit Price	Volume	Value
12 ASPEN		1 PULP	1 Cds	\$24.00	133	\$3,192.00
13 BIRCH		1 PULP	1 Cds	\$10.00	8	\$80.00
21 MAPLE-RED		1 PULP	1 Cds	\$10.00	1	\$10.00
52 PINE-NORWAY		1 PULP	1 Cds	\$29.92	15	\$448.80
53 PINE-JACK		1 PULP	1 Cds	\$16.48	7	\$115.36
61 SPRUCE-WHITE		1 PULP	1 Cds	\$14.45	9	\$130.05
62 BALSAM FIR		1 PULP	1 Cds	\$24.00	40	\$960.00
71 SPRUCE-BLACK		1 PULP	1 Cds	\$17.41	6	\$104.46
Totals:					219	\$5,040.67

Block Volume

		1	2	3	4	5	6	7	8	9	10
12 ASPEN	1 PULP	133	-	-	-	-	-	-	-	-	-
13 BIRCH	1 PULP	8	-	-	-	-	-	-	-	-	-
21 MAPLE-RED	1 PULP	1	-	-	-	-	-	-	-	-	-
52 PINE-NORWAY	1 PULP	15	-	-	-	-	-	-	-	-	-
53 PINE-JACK	1 PULP	7	-	-	-	-	-	-	-	-	-
61 SPRUCE-WHITE	1 PULP	9	-	-	-	-	-	-	-	-	-
62 BALSAM FIR	1 PULP	40	-	-	-	-	-	-	-	-	-
71 SPRUCE-BLACK	1 PULP	6	-	-	-	-	-	-	-	-	-
Total Values		\$5,040.67	-	-	-	-	-	-	-	-	-
		11	12	13	14	15	16	17	18	19	20
12 ASPEN	1 PULP	-	-	-	-	-	-	-	-	-	-
13 BIRCH	1 PULP	-	-	-	-	-	-	-	-	-	-
21 MAPLE-RED	1 PULP	-	-	-	-	-	-	-	-	-	-

Exhibit B2. Harvest Provisions

Sale Name: C22-611815

1. Access, Landings and Skid Trails

1.1 Location 1.1.3 Access to the harvest area must use the road(s) as depicted on the sale map.

2. Slash

2.0.3 All residue not utilized on landings must be pushed/bunched into piles. Under no circumstances may slash be piled within 50 feet of standing timber or Railroad ROW. See the Timber Utilization Section for additional residual utilization requirements.

3. Harvest Practices

3.0.6 Harvesting and Skidding are restricted to harvest areas designated as CLEARCUT or CCT on the map, which means cutting of all harvest species 2 inch diameter and larger.

4. Reserves

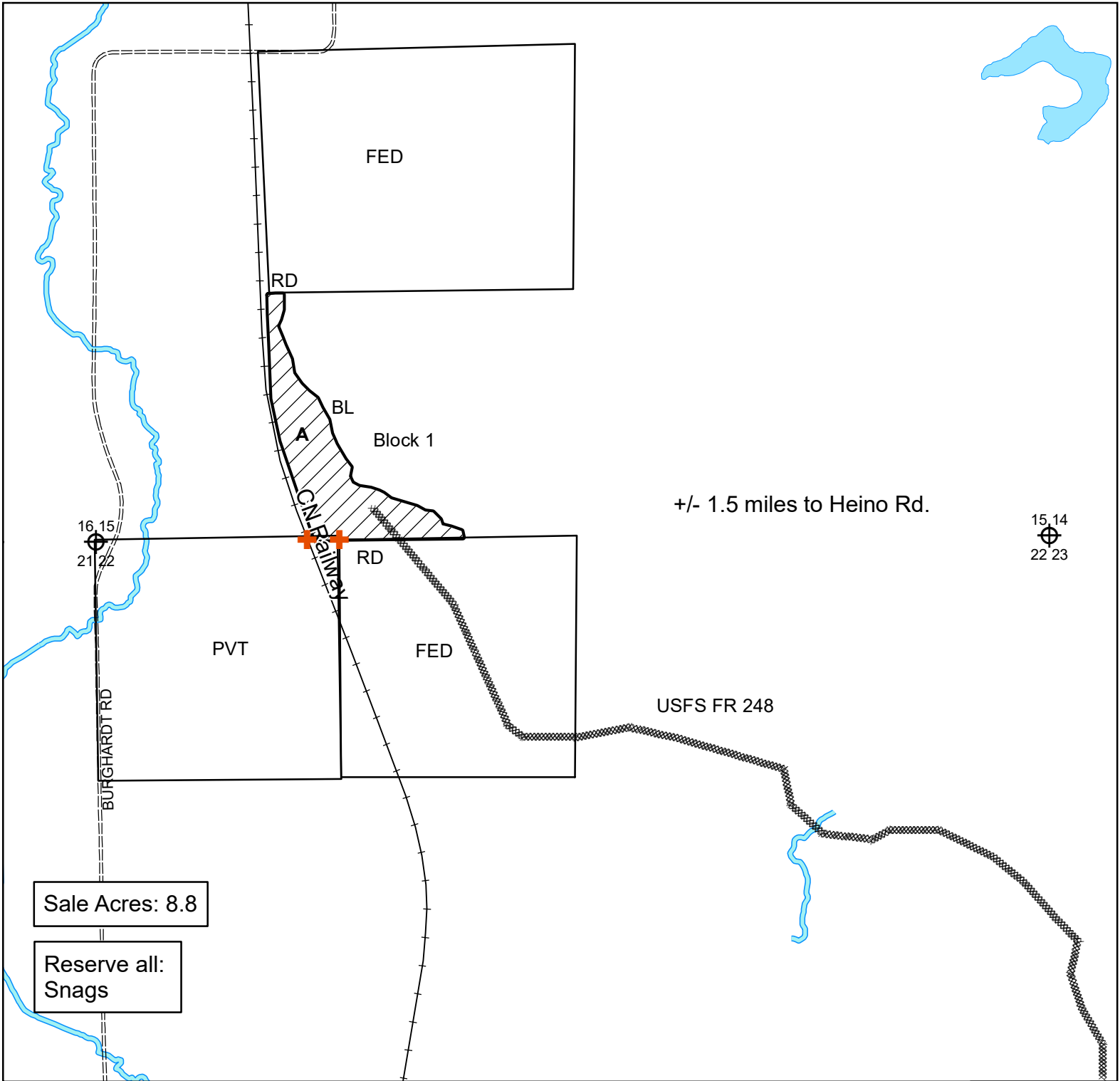
4.0.4 Reserve snags.

5. Operational Periods

5.1 Harvest and Skidding

5.1.4 Harvest and Skidding must occur during DRY SOIL conditions from July 1 to frozen ground, may include interruptions due to precipitation.

St. Louis County C22-611815

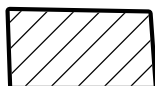


Sale Acres: 8.8

Reserve all:
Snags

Prepared By: Casey Anderson
 Map Created: 11/28/22
 TRS: 611815
 Disclaimer:
 This is a compilation of records as they appear in the Saint Louis County Offices affecting the area shown. This drawing is to be used only for reference purposes and the County is not responsible for any inaccuracies herein contained.

A Aspen



CCT- Clear cut boundary marked Red (RD) or Blue (BL)

PVT Private

FED Federal

—+— Railroad



Existing Access road



Survey Marker (protect)

